

600 North Woodland Blvd  
DeLand, Florida 32720

Phone: 386.734.4371  
[www.MuseumOfFloridaArt.com](http://www.MuseumOfFloridaArt.com)

**Museum Hours:**

Tues.-Sat. 10 am-4 pm, Sun 1-4 pm

**Gallery Admission:** Members - Free,  
Non Members - \$3.00, Children under 12 and  
Sundays - Free

The Museum of Florida Art offers a venue where:

- creativity is fostered
- appreciation of art is nurtured
- all people are welcomed

The mission of the Museum of Florida Art is to promote and showcase Florida Art and emerging and established Florida Artists through exhibitions and educational and interpretative programming made available to a diverse statewide audience of all ages; to collect and preserve works of art for this purpose; to publish books and other materials concerning the foregoing; and to make such resources available for the public.



# MUSEUM OF FLORIDA ART

## Legendary Florida 3rd Annual Lecture Series

The Museum of Florida Art is pleased to host the third annual *Legendary Florida* Lecture Series. Through this lecture series, Florida history scholars will provide historical perspectives about the events and personalities depicted in the *Legendary Florida* collection. Jackson Walker will also share insights into his creative process related to visiting scholar topics.

Join us for a rich dialogue about Florida history as brought to life through the art of Jackson Walker. All lectures will feature commentary by *Legendary Florida* artist, Jackson Walker. Lectures will be presented at the Volusia County Historic Courthouse in DeLand, FL with the *Legendary Florida* Collection.

Exhibition opens one hour prior for tour of the *Legendary Florida Collection*. Program is free and open to the public. Reservations are requested: 386.734.4371.

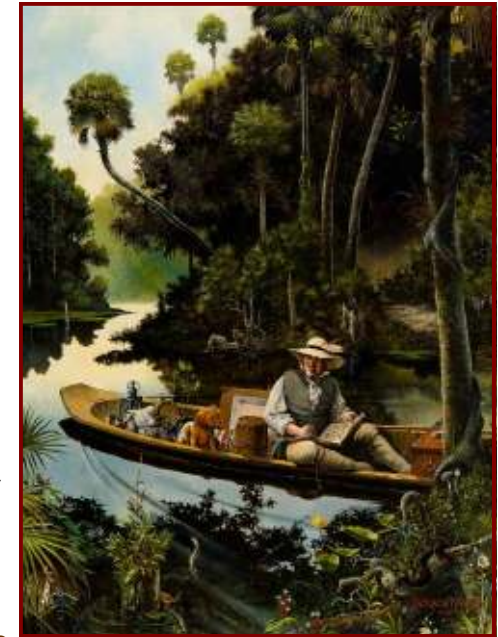
- **Land of Sunshine, State of Dreams: A Social History of Modern Florida** with Dr. Gary Mormino  
February 6, 7pm and February 7, 10 am

- **Footprints Across the South: Bartram's Trail Revisited** with author, Jim Kautz  
February 13, 7pm and February 14, 10am

**Additional Presentations of Jim Kautz lecture include:**

February 12, 7:30 pm – St. Augustine Historical Society; February 13, 9am- Bartram High School, Greencove Springs, FL; February 16, 10am- Meade Garden's Club House, Hosted by the Winter Park Garden Club

- **Heritage, History and Hurston** with N.Y. Nathiri, Zora Neale Hurston Festival founder  
February 20, 7pm and February 21, 10am



"The Flower Hunter" By Jackson Walker

# Museum of Florida Art - February 2008

SUN	MON	TUE	WED	THU	FRI	SAT
600 North Woodland Blvd, DeLand, Florida 32720 Phone: 386.734.4371 <a href="http://www.MuseumOfFloridaArt.com">www.MuseumOfFloridaArt.com</a> Museum Hours: Tuesday- Saturday, 10am - 4pm. Sunday, 1- 4 pm Gallery Admission: Members - Free, Non Members - \$3.00, Children under 12 and Sundays - Free			1			2 Mardi Gras on Main street, Downtown DeLand, 11-5
3	4 Guild Board Meeting 10am	5 WMFE's Arts Connection Filming at Museum	6 7pm Legendary Florida Lecture Series Presentation - "Land & Sunshine" with Gary Monroe	7 10am Legendary Florida Lecture Series Presentation - "Land & Sunshine" with Gary Monroe	8 Anna Tomczak Polaroid Image Transfers Workshop registration deadline	9 Anna Tomczak Workshop 9-4pm
10 Last day to see Sanctuary: Anna Tomczak Photography	11 Guild Meeting 10am with Guest speaker Dr. Ellen Smith - open to the public	12	13 7pm Legendary Florida Lecture Series Presentation - "William Bartram" by Jim Kautz	14 10am Legendary Florida Lecture Series Presentation - "William Bartram" by Jim Kautz	15 The Seasons of Life in the Sands of Time (2/15- 3/1) Sands Theater	16
17	18	19	20 7pm Legendary Florida Lecture Series Presentation - "Zora" with N.Y. Nathiri	21 10am Legendary Florida Lecture Series Presentation - "Zora" with N.Y. Nathiri	22 Exhibition opens- The Art of Chrome & Leather V - Reception on 29th	23
24	25	26	27	28	29 Chrome & Leather Bash 7-11pm	

**Schedule of Events**

- February 4** – Guild Board Meeting 10am
- February 6** – Legendary Florida Lecture Series Presentation - "Land & Sunshine" with Gary Monroe - 7pm
- February 7** – Legendary Florida Lecture Series Presentation - "Land & Sunshine" with Gary Monroe- 10am
- February 7** – Watch WMFE's Arts Connection Broadcast Featuring the Museum 7 pm
- February 9** – Anna Tomczak Workshop 9-4 pm
- February 13** – Legendary Florida Lecture Series Presentation - "William Bartram" with Jim Kautz– 7pm
- February 14** – Legendary Florida Lecture Series Presentation - "William Bartram" with Jim Kautz– 10am
- February 20** – Legendary Florida Lecture Series - "Zora" with N.Y. Nathiri 7pm
- February 21** – Legendary Florida Lecture Series - "Zora" with N.Y. Nathiri 10am
- February 29**- Chrome and Leather Bash. 7pm to 11pm

See back page for full calendar

## The Art of Chrome and Leather 2008

**Exhibition: Feb. 22 – March 16**      **Chrome & Leather Bash: Feb. 29, 7-11pm**

The *Art of Chrome and Leather* exhibition and events are annual features of the Museum's program schedule. The motorcycle continues to be intriguing as a work of art and a subject for artists of all kinds. The Museum will feature outstanding motorcycle designs and concepts with featured artists using the motorcycle as a primary focus of their creations.



Alexander and others artists presenting an assortment of motorcycle lifestyle portraits taken over the years.

**The Chrome & Leather Bash will be held in the Museum of Florida Art Feb. 29, 2008 7 to 11pm Tickets \$45 per person**

The *Art of Chrome and Leather* features this year a showcase of custom motorcycles painted by Florida's airbrush wizard, Chris Cruz. The exhibit will also include photojournalistic images by Bob

For more information, please call the Museum at 386.734.4371 or visit [www.MuseumofFloridaArt.com](http://www.MuseumofFloridaArt.com)

### Donna Meeks Children's Art Classes - Session 3

Children ages 6 to 11 can explore a variety of artistic media with instructor Donna Meeks. Two classes are available 2-3:30pm & 4-5:30 pm each Tuesday afternoon from Feb. 26 to April 8. Cost for this 6-week session is \$55 Members - \$65 nonmembers.

### Anna Tomczak Workshop

Anna Tomczak will be holding an in-depth workshop on Polaroid Image Transfers on Feb. 9 here at the Museum of Florida Art.

In this workshop you will work toward a personal vision to create artistic and provocative photographic imagery from your existing digital files, slides or traditional color prints. In the afternoon you will create Polacolor Image transfers and emulsion lifts from selected slides or prints.

The classroom will serve as the studio for making image transfer prints on paper, cloth and other surfaces. The transfers will be made from Polacolor 669 film (an additional small fee if you use extra film). Some art papers and other surfaces will be supplied and you are encouraged to bring your own materials or Daylab equipment. All levels are welcome.

Members \$55, Non-Members \$65. Plus \$10 materials fee. Workshop hours will be 9am - 4pm. Registration deadline has been extended to Feb 8. Registration forms available in lobby or at [www.MuseumOfFloridaArt.com](http://www.MuseumOfFloridaArt.com).

### Florida Biennial IV:

It's time to start thinking about the Museum of Florida Art Florida Biennial IV: Juried Competition. This fourth biennial exhibit offers emerging and established Florida artists an exceptional opportunity for exhibiting new work.

Frank Holt, Executive Director of the Mennello Museum of American Art in Orlando, will judge this year's competition. *Cash prizes will be awarded.*

Those involved with public art school programs or college level art courses recognize this exhibit as an excellent

teaching opportunity in which a variety of mediums are presented.

The *Florida Biennial* provides an ideal environment for artists from all over the state to meet and exchange ideas on the techniques and philosophies that form the foundations of their respective works. For the emerging artist, this opportunity allows for the strengthening of direction while encouraging the individual's continued exploration.

On Exhibit: June 6- August 24. Opening Reception will be held on June 6, 5 - 7 pm.

Prospectus and Application available in the Museum lobby or at [www.MuseumOfFloridaArt.com](http://www.MuseumOfFloridaArt.com).

### Equifest 2008 Raffle



### WIN A CUSTOM PAINTED MURAL ON CANVAS, TRUCK OR TRAILER

Painted by Courtney Canova, DeLand's premiere Mural Artist. Image size up to 4 x 6 feet - Subject matter limited to dogs and horses. Drawing to be held at 4pm on Saturday, April 12 at Equifest 2008 at the Lake Helen Equestrian Center. Winner does not need to be present.

Raffle tickets are \$10 each or 6 tickets for \$50 and are available at the Museum Gift Shop. For more information visit: [www.equifest.org](http://www.equifest.org).

Featured Above: Lue Gem Gong Mural by Courtney Canova detail

### Call for Volunteers

The Museum of Florida Art is looking for Volunteers to serve on the Chrome & Leather and EQUIFEST committees. We have many enjoyable positions available. Come share your talents while giving to the arts. To learn more, call the Museum at 386.734.4371.

### Guild Fashion Show

Plans are underway for this year's Guild fashion show. Mark your calendars for May 7, 2008. The event will be held again this year at the Victorian Gardens Clubhouse.

### WMFE's Arts Connection

On February 5th, WMFE's Arts Connection will be filming on location at the Museum of Florida Art. **Be sure to watch the broadcast on February 7th!**

For more information or to view the podcast visit [WMFE.org](http://WMFE.org) and click on Arts Connection.

### Museum of Florida Art Goes Green

In an effort to grow art awareness and diminish the use of paper and other resources The Museum of Florida Art is now giving our members the opportunity to opt-out of paper mailings.

If you would rather receive your copy of Museum Matters via email, please contact Kathryn Peterson at 386.734.4371 or email to [Peterson@MuseumOfFloridaArt.com](mailto:Peterson@MuseumOfFloridaArt.com).

### EQUIFEST 2008



Rafael Valle with Ivory Pal

**EQUUS IV Exhibition Dates: April 10 – May 25**  
**Reception: April 10 5 - 7pm**  
**EQUIFEST (Family Festival & Art Show) April 12, 10am - 5pm**

Join us Saturday, April 12, 10 am to 5 pm for EQUIFEST 2008. This year's event will be held again at the beautiful Lake Helen Equestrian Center in Lake Helen, Florida.

Activities include: The "Mane Event" with Denny Chapman, Rafael Valle and Ivory Pal, Olympian Michael Poulin, Cowboy Mounted Shooting, Barrel Racing, Carriage Driving, Paso Fino Drill Team, Silver Sands Drill Team, Baroque Riding, Side Saddle demonstration, Fantasy Arabians and more; Equine Art Show and sale; Romeo and Juliet, the Painting Horses; Jack Russell Terrier races; dog agility competition; children's art activities; retail vendors; animal rescue exhibitors; fabulous food and more.

Dog events start at 10 am. Horse show starts at 12:30 pm. Admission: \$10 Adults, \$5 Seniors and Students, Children 5 and under free. All proceeds benefit the youth programs of the Museum of Florida Art. For a map to the site and more information go to: [www.equifest.org](http://www.equifest.org).

In conjunction with this event, the Museum of Florida Art will be hosting an Equine Art exhibition entitled *Equus IV: Celebrating the Art of the Horse* from April 10 through May 25, 2008. Opening reception will be held Thursday, April 10 5 – 7 pm. For more information, please visit [www.MuseumofFloridaArt.com](http://www.MuseumofFloridaArt.com).

### Expanding Education: The Museum of Florida Art Children's Art Annex

The Museum of Florida Art is moving forward with acquisition plans for a Children's Art Annex. The house located behind the Museum has been identified as an ideal venue. Acquisition of this property is the subject of the Museum's grant application to the Volusia County Environmental Learning, Cultural, Historical/Heritage, and Outdoor Recreation (ECHO) Grants-in-Aid Program. The space will allow expansion of education programming as well as to offer a convening space for the Museum's community partners for arts presentations, lectures, forums, etc. The annex will be open to the public for these programs, workshops, events, and study groups. The Museum plans to use the space for lodging for artists who will present education outreach programs in the community. The Museum is seeking a legacy gift for naming this facility as it will provide a needed next step to the growth of the youth art program. The Museum has hired Pam Coffman as our new Education Coordinator. In addition to her other duties, she will be working on youth education growth plans.

### The Museum of Florida Art Announces the Legendary Florida Society

The Honorable (Rep.) John L. Mica, United States Representative (R/Florida), and Mrs. Patricia Mica have agreed to be the honorary chairs of the Museum of Florida Art's New Legendary Florida Society. If you are interested in learning more about the Legendary Florida Society and the benefits associated with membership, please call the Museum at 386.734.4371.

### Currently on Exhibit

#### Sanctuary: Anna Tomczak Photography

Through February 10, 2008

On Display in the Main Gallery, Chris Harris Permanent Collection Gallery, Dorothy Johnson Gallery, Libby West & Ann West Hall Gallery, the Florida Art Galleries



"Helicon Parrot" by Anna Tomczak

#### The Art of Chrome & Leather V

February 22, 2008 to March 16, 2008

On Display in the Main Gallery, Chris Harris Permanent Collection Gallery, Dorothy Johnson Gallery, Libby West & Ann West Hall Gallery, the Florida Art Galleries



"Wap 2" by Bob Alexander

### On Exhibit Offsite

#### Legendary Florida: The Florida History Paintings of Jackson Walker

Ongoing Exhibit  
 Volusia County Historic Courthouse,  
 120 W. Indiana Ave.,  
 DeLand, FL.



"Tribal Duel" by Jackson Walker  
 On extended loan from the permanent collection of the Museum of Florida Art